



The Case For BS^WC

**A Radical
Reimagining Of
POWER—
Grounded In
The South
And Led By
Black
Women**



BS BLACK
WC SOUTHERN
WOMEN'S
COLLABORATIVE

WHY BSWC Is Crucial to the Fight for American Democracy

As 2025 unfolds, backlash to racial justice is accelerating—particularly in the South, where regressive forces are trying to turn back the clock on civil rights, bodily autonomy, and democratic participation. But if you ask Black women organizing in Alabama, Georgia, Florida, Louisiana, Tennessee and beyond, this isn't new. It's familiar.

BSWC was born out of the necessity to believe that our collective liberation will always be tethered, thank heavens, to Black Women's power. **Out of grief, out of resilience, and out of an unshakable**

belief that no candidate, party, or short-term win can save democracy. That work belongs to the people—especially those most impacted—and it must be led by the women who have always done the heavy lifting without the headline or the check. AND, it is out of love that we fight for liberation, authority and power for ourselves and our people!

The South is changing. Population shifts and reverse migration trends are remaking the map. But demographics alone won't deliver liberation.

“We move not only out of rage for the injustices that continually deny & rob us of humanity, we organize out of love— love for ourselves, each other, our ancestors & our future babies. We fight for that. Not a need to belong to a White supremacist society.”

-PHYLLIS HILL, FOUNDER, BSWC



WHO We Are (And Why It Matters)

The Black Southern Women's Collaborative is an alliance of Black women Executive Directors and organizations building durable power across Louisiana, Florida, Tennessee, Georgia, Alabama, and Mississippi. We are strategists, trainers, fundraisers, and freedom fighters—often all at once. We speak the language of the South because we are the South.

BSWC is the only regional formation that combines electoral machines with deep relational organizing—merging data and campaign tactics with lived experience, cultural nuance, and soul. That's the difference. While others stay at the 30,000-foot view, we're at the kitchen table. At the church. On the porch. In the trenches.

We know that one organization can't do this alone. But what sets us apart is that we're not just doing more—we're doing it differently.

OUR Current Members

(Working in 70+
Counties)



WHAT We Do

BSWC isn't just a coalition. It's a political home for Black women to build, govern, and lead. Since 2020, we've:

- ▶ **Raised over \$8 million**—mostly for general operating—to hire and retain organizers with real plans to win real change.
- ▶ **Trained over 500 community members** to organize in their own backyards, especially around local elections and campaigns.
- ▶ **Incubated and strengthened grassroots orgs** like Resilient Faith (AL) and Memphis Artists for Change (TN).
- ▶ Merged civic education and electoral work to **build a roadmap for pro-Black, pro-woman co-governance** in our states.

In short: we are filling in the holes that national infrastructure keeps skipping over. And we're doing it with love, with rage, and with results.

RESULTS That Prove Our Model

- ▶ **Trained 100 Black women** in advanced relational organizing
- ▶ **Established 'People's Political Homes'** in all six states



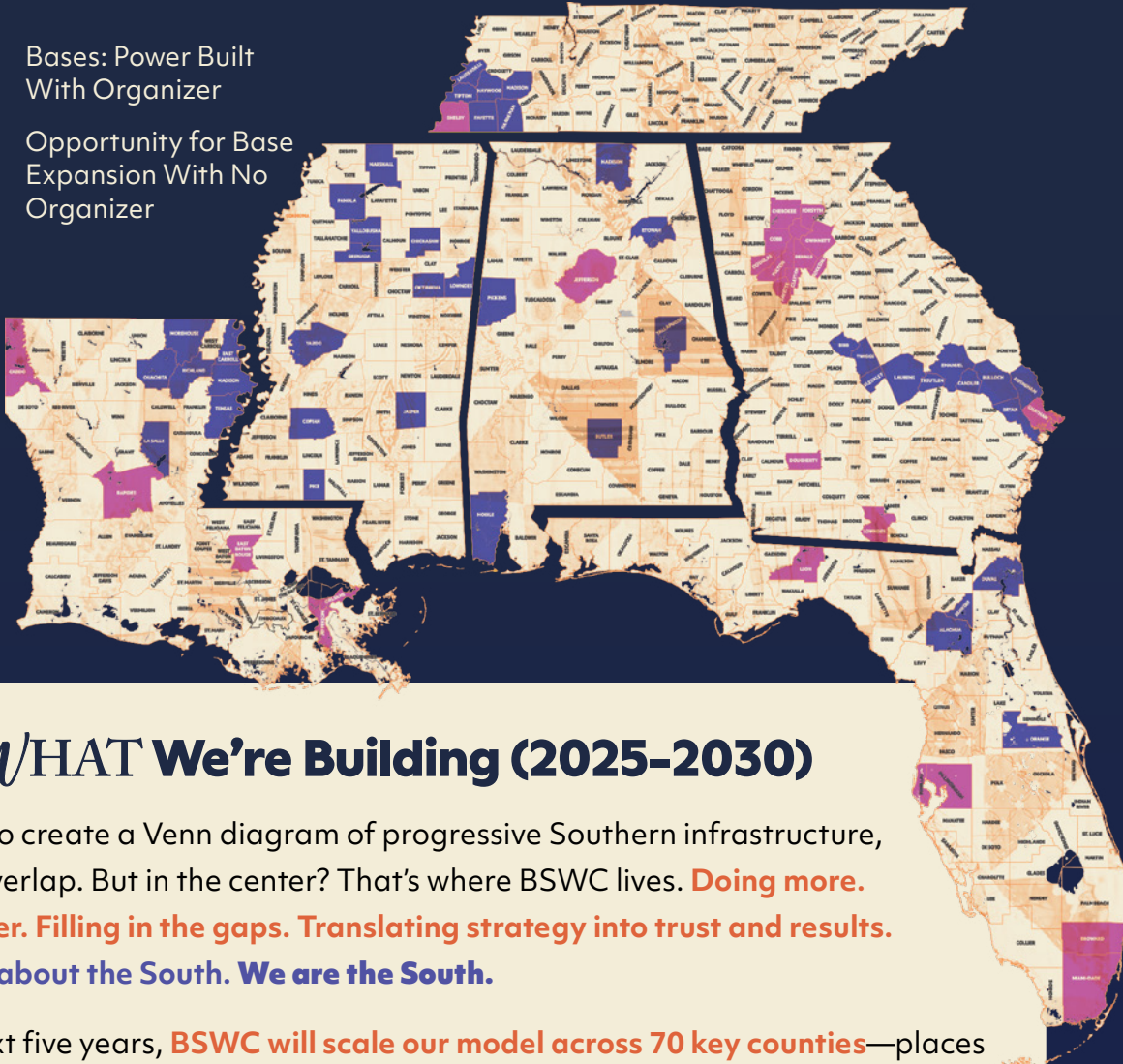


- ▶ **Restored voting rights** for 1M+ formerly incarcerated people (*Amendment 4*)



- ▶ **Secured \$1M for climate resilience** (*Albany home weatherization*)



- ▶ **Won new minority-majority congressional district** & blocked four regressive state amendments in 2025

- 
-  Bases: Power Built With Organizer
 -  Opportunity for Base Expansion With No Organizer

WHAT We're Building (2025-2030)

If you were to create a Venn diagram of progressive Southern infrastructure, you'd find overlap. But in the center? That's where BSWC lives. **Doing more. Going deeper. Filling in the gaps. Translating strategy into trust and results. Others talk about the South. We are the South.**

Over the next five years, **BSWC will scale our model across 70 key counties**—places where our organizing base and the density of Black voters create the conditions for major political and cultural shifts.

By 2030, we aim to:

- ▶ **Lead transformative voter mobilization** during the 2028 elections.
- ▶ **Cement long-term power** through policy victories like:
 - ▶ Same-day voter registration (FL)
 - ▶ Early voting expansion (MS, AL)
 - ▶ Medicaid expansion (FL)
 - ▶ Elimination of harmful preemption laws (region-wide)

This work isn't transactional. It's deeply relational. **In the South, organizing is personal.** Everyone uses different language; everyone's trust must be earned. That's why BSWC embeds in communities—not just campaigns.




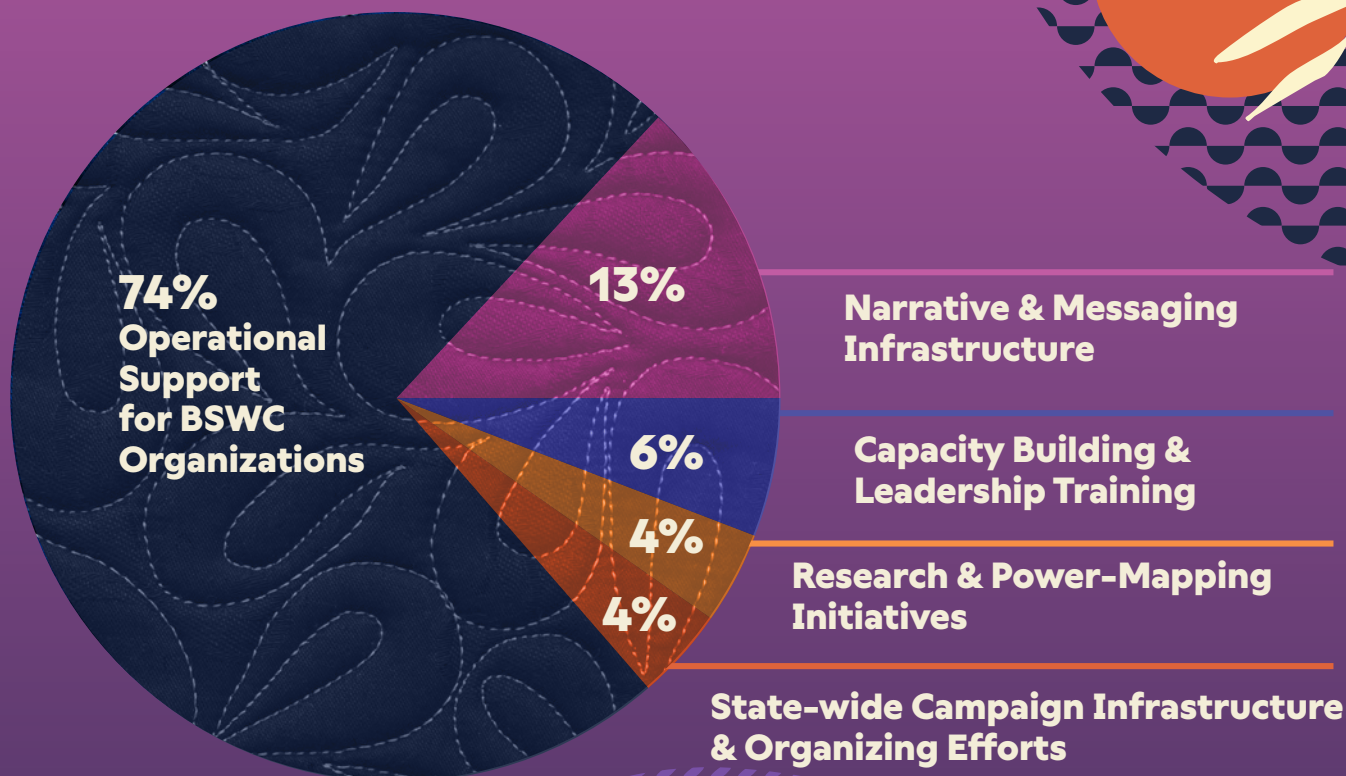
KEY Goals for 2025-2026

- ▶ **Grow our network of trained organizers** and leaders to 300+
- ▶ **Conduct deep message research** to build resonant, pro-Black narratives
- ▶ **Mobilize campaigns** that tackle voter suppression, healthcare access, and economic justice head-on
- ▶ **Engage over 750,000 high-opportunity Black voters** with strategies rooted in joy, survival, and collective agency

WHAT We We Need to Win

To meet the moment, **BSWC is seeking \$50 million over the next 10 years**, including \$7 million by the end of 2026. This will allow us to:

- ▶ Expand our 70 county-based power-building model
 - ▶ Train and retain organizing talent across six states
 - ▶ Invest in narrative strategy, policy fights, and infrastructure
 - ▶ **Sustain a Southern-led, Black-woman-led movement for democracy and liberation**
- 



FINAL Word

Funders often say they want to invest in transformative work—until they're asked to trust Black women to lead it.

Let us be clear: we are not waiting for permission. We are already building. Already shifting power. Already winning.

We're not just responding to the moment—we are redefining what power looks like in the South. If you believe the current crisis in democracy didn't happen overnight, then you know the solution won't either. **BSWC is building for the long game. Join us.**



BS BLACK *WC* SOUTHERN WOMEN'S COLLABORATIVE

Vision Statement

The Black Southern Women's Collaborative is a soft place (a place of full belonging) for Executive Directors' labor, leadership, brilliance, and fullness as human beings to be centered, honored, and invested. To create a soft place is to create a space where black women are protected, vulnerable, and can be our true, authentic selves.

Mission Statement

The mission of the Black Southern Women's Collaborative is a commitment to enhance and empower Southern Black life, particularly Black Women, no matter their status, occupation, sexuality, spirituality, or color, by holding regional space to strategize, train, and fundraise for the sustainability of our organizations, which also serve as political homes for our people.

BlackSouthernWomensCollaborative.com

